

Starcraft[®]

PROFESSIONAL TOOLS



HOLE SAWS

1017 / BI-METAL HOLE SAWS



APPLICATIONS:

- Bi-metal construction.
- Special high speed steel cutting teeth.
- 4/6 T.P.I. variable tooth pitch achieves easy but fast cutting with less efforts; less noise and increased life span.

FEATURES:

- Tip teeth hardened for cutting any usual materials with a high wear resistance.
- Hole saw and arbor in two parts, so hole saws of different diameters can be exchanged and fitted more rapidly.
- For cutting steel, cast iron, aluminum, wood & plastic.

3 cutting depths available:

- 1-1/2" | 38mm, 1-3/4" | 44mm, 1-7/8" | 48mm



INDIVIDUAL PACKAGE DISPLAY
PACKED IN COLOR PAPER BOX

ITEM NO.	DIAMETER		ITEM NO.	DIAMETER	
	INCH	MM		INCH	MM
10170301E	9/16	14	10170331E	2-1/2	64
10170302E	5/8	16	10170332E	2-9/16	65
10170303E	11/16	17	10170333E	2-5/8	67
10170304E	3/4	19	10170334E	2-11/16	68
10170305E	25/32	20	10170335E	2-3/4	70
10170306E	13/16	21	10170336E	2-7/8	73
10170307E	7/8	22	10170337E	3	76
10170308E	15/16	24	10170338E	3-1/8	79
10170309E	1	25	10170339E	3-1/4	83
10170310E	1-1/16	27	10170340E	3-3/8	86
10170311E	1-1/8	29	10170341E	3-1/2	89
10170312E	1-3/16	30	10170342E	3-5/8	92
10170313E	1-1/4	32	10170343E	3-3/4	95
10170314E	1-5/16	33	10170344E	3-7/8	98
10170315E	1-3/8	35	10170345E	4	102
10170316E	1-7/16	37	10170346E	4-1/8	105
10170317E	1-1/2	38	10170347E	4-1/4	108
10170318E	1-9/16	40	10170348E	4-3/8	111
10170319E	1-5/8	41	10170349E	4-1/2	114
10170320E	1-11/16	43	10170350E	4-3/4	121
10170321E	1-3/4	44	10170351E	5	127
10170322E	1-13/16	46	10170352E	5-1/4	133
10170323E	1-7/8	48	10170353E	5-1/2	140
10170324E	2	51	10170354E	5-3/4	146
10170325E	2-1/16	52	10170355E	6	152
10170326E	2-1/8	54	10170356E	6-5/16	160
10170327E	2-3/16	56	10170357E	6-5/8	168
10170328E	2-1/4	57	10170358E	7	178
10170329E	2-5/16	59	10170359E	7-7/8	200
10170330E	2-3/8	60			

VARIOUS SETS WITH PACKAGE DISPLAYED ON PAGE 4 & 5.

1018 BI-METAL HOLE SAWS ARBOR & ACCESSORIES



10180302



10180303



10180304



10180307



10180308



10180309



10180310



10180313



10180314



10180315



10180316



10180317



10180331



10180332



Quick Change

10180333



Quick Change
Deep Drilling up to 150mm

10180334

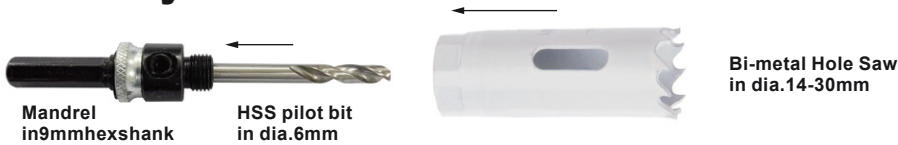
ARBORS WITH 6MM/1/4" HSS PILOT DRILLS

ITEM NO.	FOR HOLE SAWS DIAMETER		THREAD SIZE	SHANK
	(MM)	(INCH)		
10180302E	14 to 30	9/16 to 1-3/16	1/2-20 UNF	1/4" round
10180303E	14 to 30	9/16 to 1-3/16	1/2-20 UNF	3/8" hex
10180304E	14 to 30	9/16 to 1-3/16	1/2-20 UNF	7/16" hex
10180307E	32 to 203	1-1/4 to 8	5/8-18 UNF	7/16" hex
10180308E	32 to 203	1-1/4 to 8	5/8-18 UNF	7/16" hex
10180309E	32 to 203	1-1/4 to 8	5/8-18 UNF	3/8" hex
10180310E	32 to 203	1-1/4 to 8	5/8-18 UNF	5/8" hex
10180313E	14 to 30	9/16 to 1-3/16	1/2-20 UNF	SDS-plus
10180314E	32 to 203	1-1/4 to 8	5/8-18 UNF	SDS-plus
10180315E	32 to 203	1-1/4 to 8	5/8-18 UNF	7/16" hex
10180316E	14 to 30	9/16 to 1-3/16	1/2-20 UNF	1/4" 3 flats
10180317E	32 to 203	1-1/4 to 8	5/8-18 UNF	1/4" 3 flats
10180331E	14 to 30	9/16 to 1-3/16	1/2-20 UNF	9.5mm 3/8" hex
10180332E	32 to 203	1-1/4 to 8	5/8-18 UNF	9.5mm 3/8" hex
10180333E	14 to 30	9/16 to 8	1/2-20 UNF, 5/8-18 UNF	SDS-plus or 3/8" hex
10180334E	32 to 203	1-1/4 to 8	5/8-18 UNF	9.5mm 3/8" hex

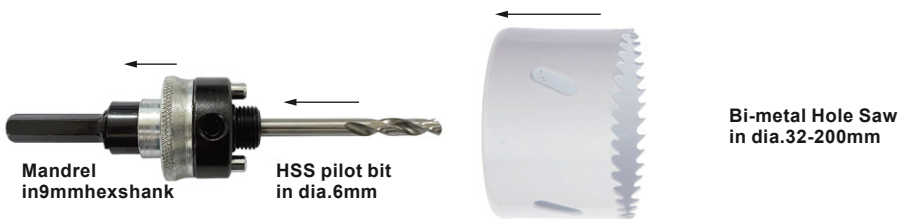
1018 / BI-METAL HOLE SAWS ARBOR & ACCESSORIES

QUICK RELEASE ARBOR

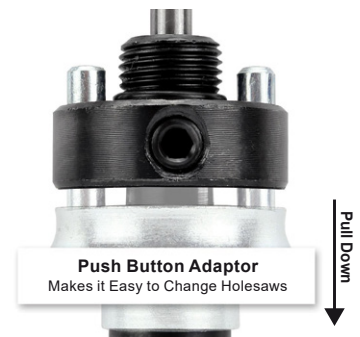
Assembly Guide



Insert the shank of hss pilot bit into the manrel and lockit bytightening the set screw;
Insert the pilot bit through the back of the hole saw;
Screw the hole saw onto the mandre 's threads unti tight

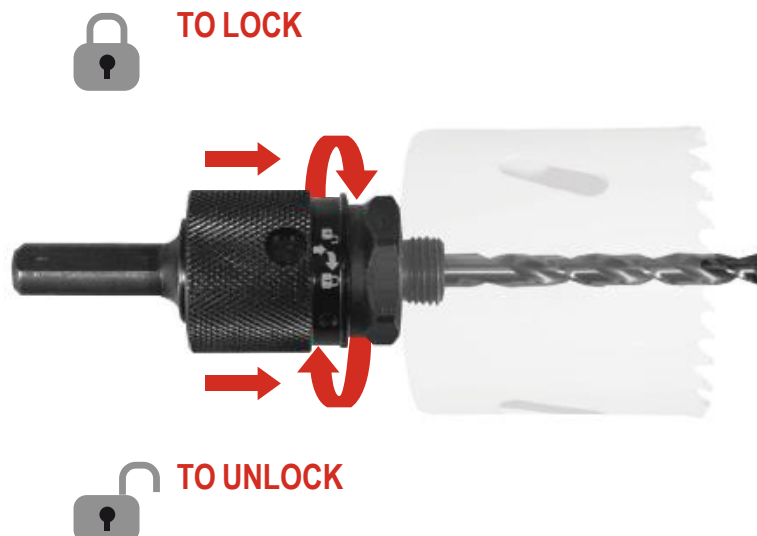


Insert the shank of hss pilot bit into the manrel and lock it by tightening the set screw;
Insert the pilot bit through the back of the hole saw;
Screw the hole saw onto the mandrel's threads without being bottomed out on threads.
Pull back the silver collar and screw the hole saw onto the bottom of mandrel's thread, then release the collar to align the pins with holes on the back of the hole saw to secure the hole saw in place.



QUICK CHANGE ARBOR

Unique quick change system for rapid hole saw change
Easy locking system for secure drilling
Replaceable pilot drill for long arbor life
Fits all brands of hole saws



1017 BI-METAL HOLE SAWS SETS



Item No. 101745B
9PCS ELECTRICIANS' KIT
in plastic case
 (6) Bi-metal hole saws: 22, 29, 35, 44, 51, 64mm (7/8", 1-1/8", 1-3/8", 1-3/4", 2", 2-1/2");
 (1) 3/8" hex shank arbor with pilot bit;
 (1) 7/16" hex shank arbor with pilot bit;
 (1) arbor adapter.



Item No. 101746B
9PCS ELECTRICIANS' KIT
in plastic case
 (6) Bi-metal hole saws: 22, 29, 35, 44, 51, 64mm (7/8", 1-1/8", 1-3/8", 1-3/4", 2", 2-1/2");
 (1) 3/8" hex shank arbor with pilot bit;
 (1) 7/16" hex shank arbor with zinc-plated knurled locking collar and pilot bit;
 (1) arbor adapter.



Item No. 101747B
9PCS PLUMBERS' KIT
in plastic case
 (6) Bi-metal hole saws: 19, 22, 29, 38, 44, 57mm (3/4", 7/8", 1-1/8", 1-1/2", 1-3/4", 2-1/4");
 (1) 3/8" hex shank arbor with pilot bit;
 (1) 7/16" hex shank arbor with pilot bit;
 (1) arbor adapter.



Item No. 101748B
9PCS PLUMBERS' KIT
in plastic case
 (6) Bi-metal hole saws: 19, 22, 29, 38, 44, 57mm (3/4", 7/8", 1-1/8", 1-1/2", 1-3/4", 2-1/4");
 (1) 3/8" hex shank arbor with pilot bit;
 (1) 7/16" hex shank arbor with zinc-plated knurled locking collar and pilot bit;
 (1) arbor adapter.



Item No. 110601B
14PCS QUICK CHANGE BI-METAL HOLE SAW KIT
in plastic case
 (6) Bi-metal hole saw with adapter nut: 22, 29, 35, 44, 51, 64mm (7/8", 1-1/8", 1-3/8", 1-3/4", 2", 2-1/2");
 (1) 7/16" hex shank quick change arbor with pilot bit;
 (1) replacement pilot drill;
 (2) adapter nut with 1/2"-20UNF thread;
 (4) adapter nut with 5/8"-18UNF thread.



Item No. 101749O
14PCS BI-METAL HOLE SAW KIT
in blow mould case
 (10) Bi-metal hole saws: 19, 22, 29, 35, 38, 44, 51, 54, 57, 64mm (3/4", 7/8", 1-1/8", 1-3/8", 1-1/2", 1-3/4", 2", 2-1/8", 2-1/4", 2-1/2");
 (1) small arbor with pilot drill;
 (1) large arbor with pilot drill;
 (1) replacement pilot drill;
 (1) arbor adapter.

Item No. 101744E
9PCS PLUMBERS' KIT
in color paper box
 (6) Bi-metal hole saws: 19, 22, 29, 38, 44, 57mm (3/4", 7/8", 1-1/8", 1-1/2", 1-3/4", 2-1/4");
 (1) 3/8" hex shank arbor with pilot bit;
 (1) 7/16" hex shank arbor with pilot bit;
 (1) arbor adapter.



1017 BI-METAL HOLE SAWS SETS



Item No.101750A
16pcs Bi-metal hole saws set in Aluminum case
 (13) hole saws-Ø19,20,22,25, 29,32,35,38,44, 51,57,64,76mm
 (1) arbor extension-300mm
 (1) 7/16" hex shank arbor with HSS pilot bit for Ø32-203mm
 (1) 1/4" round shank arbor with HSS pilot bit for Ø14-32mm



Item No.101751B
16pcs Bi-metal hole saws set in Plastic case
 (13) hole saws-Ø19,20,22,25, 29,35,38,40,48,60,65,68,86mm
 (1) arbor extension-300mm
 (1) 7/16" hex shank arbor with HSS pilot bit for Ø32-203mm
 (1) 3/8" hex shank arbor with HSS pilot bit for Ø14-32mm



Item No.101752B
12pcs Bi-metal hole saws set in Plastic case
 (10) hole saws-Ø19,22,25,29,35, 38,44,51,57,68mm
 (1) 7/16" hex shank arbor with HSS pilot bit for Ø32-203mm
 (1) 3/8" hex shank arbor with HSS pilot bit for Ø14-32mm



Item No.101753A
16pcs Bi-metal hole saws set in Aluminum case
 (13) hole saws-Ø19,20,22,25, 29,35,38,40,48,60,65,68,86mm
 (1) arbor extension-300mm
 (1) 7/16" hex shank arbor with HSS pilot bit for Ø32-203mm
 (1) 3/8" hex shank arbor with HSS pilot bit for Ø14-32mm

1101 BI-METAL STEEL SHEET HOLE SAWS

APPLICATIONS:

- Designed for Mild Steel, Stainless Steel, Aluminium sheets up to 2mm.

FEATURES:

- HSS Cutting edge with 8% cobalt for extra durability.
- Shallow cup optimised for drilling thin metal.
- Slim kerf provides reduced resistance for rapid drilling.
- Internal ejection spring automatically ejects the metal disc for hassle-free drilling.
- Stop shoulder prevents over drilling.
- 1/4" hex impact driver shank for use in impact drivers.



ITEM NO.	DIAMETER	
	INCH	MM
11010301C	9/16	14
11010302C	5/8	16
11010303C	11/16	18
11010304C	3/4	19
11010305C	25/32	20
11010306C	7/8	22
11010307C	1	25
11010308C	1-3/16	30
11010309C	1/4	32
11010310C	1-7/8	35
11010311C	1-1/2	38



**INDIVIDUAL PACKAGE DISPLAY
PACKED IN CLAMSHELL**

CARBIDE TIPPED HOLE SAW

3tpi Carbide teeth design

Gives best durability and life in extreme multi-material applications.

Carbide teeth

Outperforms bi-metal hole saw. For the toughest applications where bi-metal holes can not cut.

Plane Slots

enhance user productivity by providing best access and leverage to remove material slugs.

**41mm (1-5/8")
Cutting depth**

for cutting up to 1-5/8in thick materials.

APPLICATIONS:

For cutting stainless steel, fastener embedded wood, cement board, fiberglass, plaster, asphalt shingles and more.



1102 / T.C.T HOLE SAWS



INDIVIDUAL PACKAGE DISPLAY
PACKED IN COLOR PAPER BOX

APPLICATIONS:

- Cuts stainless steel sheet, ceramic tile, fastener embedded wood, cement board, fiberglass, plaster and more.

FEATURES:

- Carbide teeth for 50x life in extreme materials.
- Outperforms bi-metal hole saws. For the toughest applications where bi-metal hole saws cannot cut.
- 3tpi carbide teeth design gives best durability and longest life in extreme applications.
- Plane slots enhance user productivity by providing best access and leverage to remove.

ITEM NO.	DIAMETER		ITEM NO.	DIAMETER	
	INCH	MM		INCH	MM
11020301E	9/16	14	11020315E	2-5/8	67
11020302E	5/8	16	11020316E	2-3/4	70
11020303E	3/4	19	11020317E	3	76
11020304E	7/8	22	11020318E	3-1/8	79
11020305E	1	25	11020319E	3-1/4	83
11020306E	1-1/8	29	11020320E	3-1/2	89
11020307E	1-1/4	32	11020321E	3-5/8	92
11020308E	1-3/8	35	11020322E	4	102
11020309E	1-1/2	38	11020323E	4-1/8	105
11020310E	1-3/4	44	11020324E	4-1/4	108
11020311E	2	51	11020325E	4-1/2	114
11020312E	2-1/8	54	11020326E	5	127
11020313E	2-3/8	60	11020327E	6	152
11020314E	2-1/2	64			

1048 / T.C.T SELF-FEED HOLE SAWS



INDIVIDUAL PACKAGE DISPLAY
PACKED IN COLOR PAPER BOX

APPLICATIONS:

- Multiple uses - cutting wood, MDF, plastics, ceramic wall tiles and building bricks.
- Suitable for use in mains and battery powered tools.
- Cutting depth up to 60mm(2-3/8").

FEATURES:

- Carbide tipped teeth for outstanding cutting performance and product durability.
- Smooth cut, with minimal heat build up.
- Supported by a comprehensive range of arbors (order separately).

ITEM NO.	DIAMETER		ITEM NO.	DIAMETER	
	INCH	MM		INCH	MM
10480201E	5/8	16	10480221E	2-31/64	63
10480202E	3/4	19	10480222E	2-9/16	65
10480203E	25/32	20	10480223E	2-5/8	67
10480204E	7/8	22	10480224E	2-11/16	68
10480205E	1	25	10480225E	2-3/4	71
10480206E	1-1/16	27	10480226E	2-7/8	73
10480207E	1-1/8	29	10480227E	2-29/32	74
10480208E	1-3/16	30	10480228E	3	76
10480209E	1-1/4	32	10480229E	3-5/32	80
10480210E	1-3/8	35	10480230E	3-5/8	92
10480211E	1-7/16	36	10480231E	4	102
10480212E	1-1/2	38	10480232E	4-1/8	105
10480213E	1-9/16	40	10480233E	4-3/8	111
10480214E	1-3/4	44	10480234E	4-15/16	125
10480215E	1-5/32	45	10480235E	5	127
10480216E	1-31/32	50	10480236E	5-1/4	133
10480217E	2	51	10480237E	5-1/2	140
10480218E	2-1/8	54	10480238E	5-3/4	146
10480219E	2-1/4	57	10480239E	6	152
10480220E	2-3/8	60			

1104 / T.C.T HOLE SAWS

Aggressive 3-tooth geometry

Unique cutting angle permits up to 5X faster cutting than bi-metal hole saws.

Large Carbide teeth

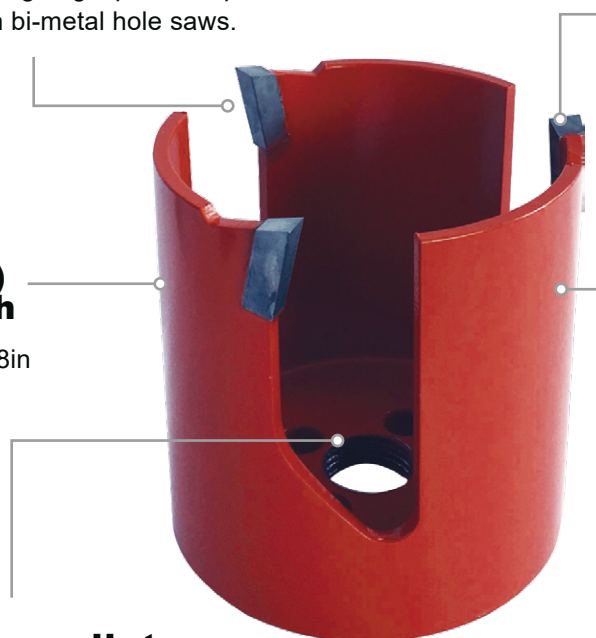
Offer maximum durability against unintended nail impacts.

59mm (2-3/8") Cutting depth

For cutting up to 2-3/8in thick materials.

One piece construction body (integrated thicker backer)

Extends extreme life performance, in demanding applications and adds extra durability.



Wide and deep gullets

Enable easy plug removal.



APPLICATIONS:

- Cuts through wood with nails, screws, plaster, shingles, cement board and more.
- Suitable for use in mains and battery powered tools.
- Cutting depth up to 60mm (2-3/8").

FEATURES:

- Deep gullets for easy plug removal.
- Rugged construction for extra life.
- Carbide teeth for wood with nails, cement board, composite enclosures and other abrasive materials.
- Faster than self-feed bits in wood.
- Faster than carbide grit in abrasive materials.

ITEM NO.	DIAMETER		ITEM NO.	DIAMETER		ITEM NO.	DIAMETER		ITEM NO.	DIAMETER	
	INCH	MM		INCH	MM		INCH	MM		INCH	MM
11040301E	5/8	16	11040312E	1-9/16	40	11040323E	2-3/4	70	11040334E	4-1/8	105
11040302E	3/4	19	11040313E	1-5/8	41	11040324E	2-7/8	73	11040335E	4-1/4	108
11040303E	25/32	20	11040314E	1-3/4	44	11040325E	3	76	11040336E	4-5/16	109
11040304E	7/8	22	11040315E	1-7/8	48	11040326E	3-1/8	79	11040337E	4-3/8	111
11040305E	1	25	11040316E	2	51	11040327E	3-1/4	83	11040338E	4-1/2	114
11040306E	1-1/16	27	11040317E	2-1/8	54	11040328E	3-3/8	86	11040339E	4-5/8	118
11040307E	1-1/8	29	11040318E	2-1/4	57	11040329E	3-1/2	89	11040340E	4-3/4	121
11040308E	1-3/16	30	11040319E	2-3/8	60	11040330E	3-5/8	92	11040341E	5	127
11040309E	1-1/4	32	11040320E	2-1/2	64	11040331E	3-3/4	95	11040342E	5-1/2	140
11040310E	1-3/8	35	11040321E	2-9/16	65	11040332E	3-7/8	98	11040343E	6	152
11040311E	1-1/2	38	11040322E	2-5/8	67	11040333E	4	102	11040344E	6-1/4	159

1102 / T.C.T HOLE SAWS



INDIVIDUAL PACKAGE DISPLAY
PACKED IN COLOR PAPER BOX

APPLICATIONS:

- For precise holes in porcelain tile, ceramic tile, granite, marble, cement board and fibreglass.

FEATURES:

- Tough brazed diamond grit for long life.
- Ultra-thin kerf provides low torque for faster cutting and prolonged battery life.
- Use with drills (1,500 – 2,000rpm) with arbor or angle grinders with adaptor (8,000 – 12,000rpm).
- Minimal coolant required for cutting hard tile, stone and glass. Use fully dry on other materials.

ITEM NO.	DIAMETER		ITEM NO.	DIAMETER	
	INCH	MM		INCH	MM
25490301E	3/4"	19	25490322E	2-5/8	67
25490302E	25/32	20	25490323E	2-11/16	68
25490303E	7/8	22	25490324E	2-3/4	70
25490304E	1	25	25490325E	2-7/8	73
25490305E	1-1/8	29	25490326E	3	76
25490306E	1-1/4	30	25490327E	3-1/8	79
25490308E	1-17/64	32	25490328E	3-1/4	83
25490309E	1-3/8	35	25490329E	3-1/2	89
25490310E	1-1/2	38	25490330E	3-5/8	92
25490311E	1-5/8	41	25490331E	3-3/4	95
25490312E	1-3/4	44	25490332E	3-15/16	100
25490313E	1-7/8	47	25490333E	4	102
25490314E	2	51	25490334E	4-1/8	105
25490315E	2-1/8	53	25490335E	4-1/4	108
25490317E	2-9/64	54	25490336E	4-5/16	110
25490318E	2-1/4	57	25490337E	4-1/2	114
25490319E	2-3/8	60	25490338E	5	127
25490320E	2-1/2	64	25490339E	6	152
25490321E	2-9/16	65			

3031 / ARBORS WITH T.C.T. PILOT DRILL BIT FOR CARBIDE TIPPED/GRIT HOLE SAWS



30310001



30310002



30310005



30310006



30310007

ITEM NO.	FOR HOLE SAWS DIAMETER		SHANK
	(MM)	(INCH)	
30310301E	14 to 30	9/16 to 1-3/16	3/8" hex
30310302E	14 to 30	9/16 to 1-3/16	7/16" hex
30310305E	32 to 76	1-5/16 to 3	7/16" hex
30310306E	33 to 177	1-5/16 to 6-31/32	7/16" hex
30310307E	33 to 177	1-5/16 to 6-31/32	7/16" hex

4020 / HSS HOLE SAWS



INDIVIDUAL PACKAGE DISPLAY
PACKED IN CLAMSHELL

APPLICATIONS:

- For high precision drilling in metallic sheet.

FEATURES:

- HSS cutting edges.
- Sharper tooth tip for easier cutting.
- Better chip clearance.
- Longer product life; teeth stay sharp longer.
- Exchangeable centering pilot drill.
- Exchangeable threaded arbor with three flatted shank.
- Overall length 75mm (2-61/64").

ITEM NO.	CUTTING DIA. (MM)	SHANK (MM)	ITEM NO.	CUTTING DIA. (MM)	SHANK (MM)	ITEM NO.	CUTTING DIA. (INCH)	SHANK (INCH)	ITEM NO.	CUTTING DIA. (INCH)	SHANK (INCH)
4020001C	15	8	40200018C	40	12	40209001C	1/2	5/16	40209018C	2-5/8	1/2
40200002C	16	8	40200019C	42	12	40209002C	5/8	5/16	40209019C	2-3/4	1/2
40200003C	18	8	40200020C	45	12	40209003C	3/4	5/16	40209020C	2-7/8	1/2
40200004C	19	8	40200021C	50	12	40209004C	7/8	5/16	40209021C	3	1/2
40200005C	20	8	40200022C	53	12	40209005C	1	3/8	40209022C	3-1/8	1/2
40200006C	22	8	40200023C	54	12	40209006C	1-1/8	3/8	40209023C	3-1/4	1/2
40200007C	23	8	40200024C	60	12	40209007C	1-1/4	3/8	40209024C	3-3/8	1/2
40200008C	24	8	40200025C	65	14	40209008C	1-3/8	3/8	40209025C	3-1/2	1/2
40200009C	25	10	40200026C	70	14	40209009C	1-1/2	1/2	40209026C	3-5/8	1/2
40200010C	26	10	40200027C	75	14	40209010C	1-5/8	1/2	40209027C	3-3/4	1/2
40200011C	28	10	40200028C	80	14	40209011C	1-3/4	1/2	40209028C	3-7/8	1/2
40200012C	30	10	40200029C	85	14	40209012C	1-7/8	1/2	40209029C	4	1/2
40200013C	32	10	40200030C	90	14	40209013C	2	1/2			
40200014C	34	10	40200031C	95	14	40209014C	2-1/8	1/2			
40200015C	35	10	40200032C	100	14	40209015C	2-1/4	1/2			
40200016C	36	10	40200033C	105	14	40209016C	2-3/8	1/2			
40200017C	38	12				40209017C	2-1/2	1/2			



Item No. 402001W

**8PCS SET
in wooden box**
CONTENTS:
16, 20, 22, 25, 28, 30, 32, 35mm



Item No. 402002W

**8PCS SET
in wooden box**
CONTENTS:
5/8", 3/4", 7/8", 1", 1-1/8", 1-1/4",
1-3/8", 1-1/2"

4021 / CARBIDE TIPPED HOLE SAWS. SHORT TYPE



INDIVIDUAL PACKAGE DISPLAY
PACKED IN CLAMSHELL

APPLICATIONS:

- For perfect drilling in steel, stainless steel, non-ferrous and light metals, plastics and wood.

FEATURES:

- Carbide tipped cutting edges.
- Sturdy construction.
- Hole saw and arbor in one piece.
- Good chip removal.
- Longer product life; teeth stay sharp longer.
- Exchangeable centering pilot drill.
- Smooth cutting provides less vibration.
- Unsuitable for percussion-drill operation.

ITEM NO.	CUTTING DIA. (MM)	SHANK (MM)	ITEM NO.	CUTTING DIA. (MM)	SHANK (MM)	ITEM NO.	CUTTING DIA. (INCH)	SHANK (INCH)	ITEM NO.	CUTTING DIA. (INCH)	SHANK (INCH)
40210001C	15	10	40210011C	30	10	40219001C	1/2	3/8	40219011C	1-3/4	1/2
40210002C	16	10	40210012C	32	10	40219002C	5/8	3/8	40219012C	1-7/8	1/2
40210003C	18	10	40210013C	35	10	40219003C	3/4	3/8	40219013C	2	1/2
40210004C	19	10	40210014C	36	12.5	40219004C	7/8	3/8	40219014C	2-1/8	1/2
40210005C	20	10	40210015C	38	12.5	40219005C	1	3/8	40219015C	2-1/4	1/2
40210006C	22	10	40210016C	40	12.5	40219006C	1-1/8	3/8	40219016C	2-3/8	1/2
40210007C	23	10	40210017C	45	12.5	40219007C	1-1/4	3/8			
40210008C	25	10	40210018C	50	12.5	40219008C	1-3/8	3/8			
40210009C	26	10	40210019C	53	12.5	40219009C	1-1/2	3/8			
40210010C	28	10	40210020C	54	12.5	40219010C	1-5/8	1/2			



Item No. 402101W

**8PCS SET
in wooden box**
CONTENTS:
16,20,22,25,28,30,32,35mm



Item No. 402102W

**8PCS SET
in wooden box**
CONTENTS:
5/8", 3/4", 7/8", 1", 1-1/8", 1-1/4", 1-3/8", 1-1/2"

1026 / ADJUSTABLE CIRCLE HOLE CUTTERS



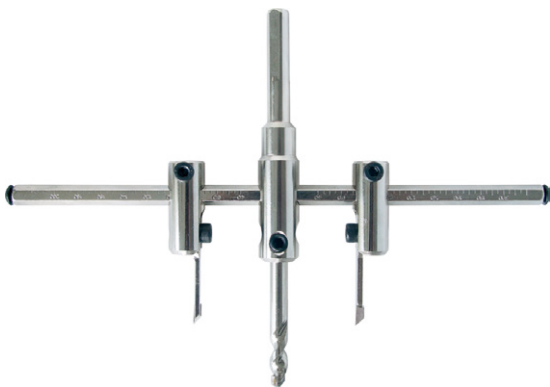
10260001

APPLICATIONS:

- For cutting plywood, laminates, composite boards, plastic, rubber and other soft materials.
- To adjust the size locate the inner edges of the blade holders against the size graduation.
- Not suitable for steel sheet or other metals.

FEATURES:

- Alloy tool steel cutter blades and centre pilot drill bit.
- Graduated in metric and inch sizes.
- Cutting capacity:
30 to 120mm (1-3/16" to 4-3/4");
30 to 200mm (1-3/16" to 8");
30 to 300mm (1-3/16" to 12").
- Maximum thickness: 30mm.



10260002

APPLICATIONS:

- For cutting wood, plywood, acrylic, laminates, composites, aluminium sheet, fiber cement board, plasterboard, hardboard, plastic, rubber, etc.
- To adjust the size locate the inner edges of the blade holders against the size graduation.
- Not suitable for steel or other metals.

FEATURES:

- Carbide tipped cutter blades and centre pilot drill bit.
- Graduated in metric and inch sizes.
- Cutting capacity: 30 to 200mm (1" to 8").



10260003

APPLICATIONS:

- For cutting ceramic tile, laminates, composite boards, plastic and other abrasive materials.
- To adjust the size locate the inner edges of the blade holders against the size graduation.
- Not suitable for steel or other metals.

FEATURES:

- Carbide tipped cutter blades and centre pilot drill bit.
- Graduated in metric and inch sizes.
- Cutting capacity: 30 to 300mm (1" to 12")

1019 / MULTI-BLADES HOLE SAWS



APPLICATIONS:

- For drilling quickly and neatly holes in wood, plaster board, construction panels and plastics.

FEATURES:

- Tungsten carbon steel saw blades.
- Special hardened saw teeth.
- Complete with metal locating plate, pilot drill bit.



INDIVIDUAL PACKAGE DISPLAY
PACKED IN CLAMSHELL

ITEM NO.	NO. OF BLADE	QUICK CHANGE SAW BLADES (MM)	CUTTING DEPTH (MM)	SHANK (MM)
101904C	3pcs	Φ40, 54, 65mm	18 mm	8mm hex
101905C	3pcs	Φ60, 68, 74 mm	33mm	8mm hex
101906C	3pcs	Φ40, 54, 65 mm	40mm	8mm hex
101907C	4pcs	Φ25, 35, 43, 53 mm	33mm	8mm hex
101908C	5pcs	Φ68, 74, 80, 90, 100 mm	33mm	8mm hex
101903C	5pcs	Φ60, 68, 74, 80, 95 mm	33mm	8mm hex
101909C	5pcs	Φ60, 68, 74, 80, 95 mm	40mm	8mm hex
101910C	5pcs	Φ28, 35, 50, 68, 74 mm	40mm	8mm hex
101911C	6pcs	Φ25, 32, 40, 45, 54, 65 mm	23mm	8mm hex
101912C	7pcs	Φ25, 32, 38, 45, 50, 56, 62 mm	18mm	8mm hex
101901C	7pcs	Φ25, 32, 38, 45, 50, 56, 62 mm	23mm	8mm hex
101913C	7pcs	Φ25, 32, 38, 45, 50, 56, 62 mm	33mm	8mm hex
101902C	7pcs	Φ25, 32, 38, 45, 50, 56, 62 mm	50mm	8mm hex
101914C	1pcs	Φ65 mm	33mm	8mm hex
101915C	1pcs	Φ68 mm	23mm	8mm hex
101916C	1pcs	Φ68 mm	33mm	8mm hex

**Enjoy Work!
Enjoy Life!**

www.starcrafttools.com



Add: No.880 Xingwen Road; Jiading, Shanghai, China
Tel: 0086-21-33517000, 33517100
Email: sales@starcraftgroup.com
Copyright©2023