

# *starcraft*<sup>®</sup>

PROFESSIONAL TOOLS



## **HAND TOOLS**

### 70690301N / LINOLEUM / VINYL KNIFE



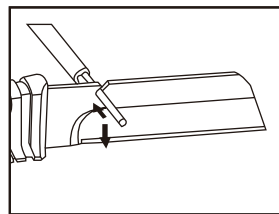
- Sharp stainless steel blade with precision ground edge.
- Soft grip handle reduces hand fatigue, provides firm grip.
- For cutting and trimming linoleum or vinyl floor, covering, roofing and carpeting.
- Overall length: 220mm



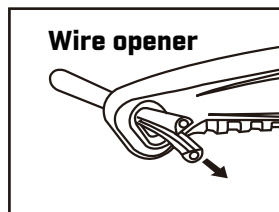
### 70700301N / ELECTRICIAN'S KNIFE



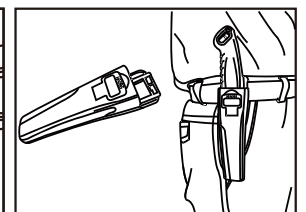
- Straight stainless steel blade.
- Ergonomic handle with soft grip.
- "Quick Stripper" strips thin wire easily.
- Portable sheath with safety lock suitable to carry on belt
- Ideal for electrical work.
- Overall length: 238mm



Quick stripper



Cut open wire insulation vertically before tearing it off by hand



Portable sheath with safety lock suitable to carry on belt

**70710301N 10-in-1 FOLDING MULTI-PURPOSE SCRAPER**



- 36mm Stainless steel blade.
- Hardened zinc alloy handle with TPR grip.
- Foldable type for easy storage and carrying.
- Works as well as Flat scraper, Crack cleaner, Curved scraper, Serrated blade, Nail puller, Roller cleaner, Can opener, Bottle Opener, Pry, Hammer End.

**70710302N 12-in-1 MULTI-PURPOSE SCRAPER**



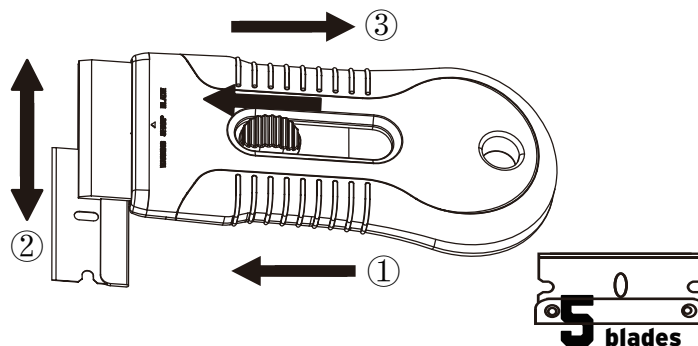
- 76mm Stainless steel blade
- Hardened zinc alloy handle with TPR grip.
- Foldable type for easy storage and carrying.
- Works as well as Flat scraper, Crack cleaner, Curved scraper, Concave scraper, Convex scraper, Nail puller, 1/4" nut wrench, 3/8" nut wrench, Roller cleaner, Car opener, Bottle Opener, Hammer End.



### 70720301N / RAZOR BLADE SCRAPER



- Plastic construction with nonslip soft-grip handles to prevent fatigue during extended use.
- Retractable blade
- Uses standard 39.5mm single-edge razor blades
- Includes 5 blades



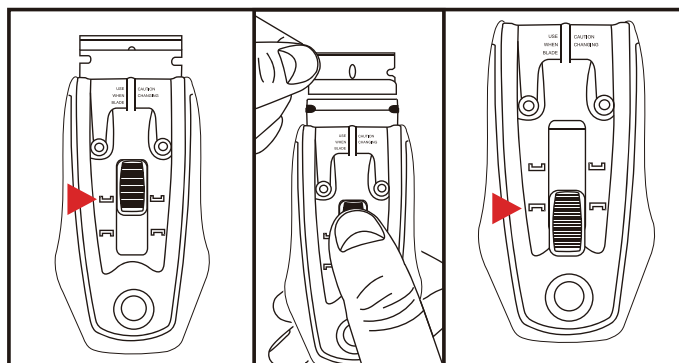
#### How to replace the razor blade:

1. Press the button and push forward until the blade slot is completely pushed out.
2. Align the blade with the carabiner, take out the old blade by the left or right and place the new one on the blade slot.
3. Press the button and push it back to the bottom position to retract blade.

### 70730301N / RAZOR BLADE SCRAPER



- Steel construction with nonslip soft-grip handle to prevent fatigue during extended use.
- Easy push-button opening and locking mechanism to safely change the blades.
- Retractable blade
- Uses standard 39.5mm single-edge razor blades



#### How to replace the razor blade:

1. Press the button and push forward until the blade slot is completely pushed out.
2. Align the blade with the carabiner, take out the old blade by the left or right and place the new one on the blade slot.
3. Press the button and push it back to the bottom position to retract blade.

**70740301HC / LIGHT WEIGHT SCRAPER**



- Light-weight tubular aluminum alloy shaft and soft grip handle.
- Sharp 100mm blade mounted on angled head for effective scraping
- Ideal for scraping wallpaper, adhesive residue, paint, vinyl and tile.
- Overall length:305mm

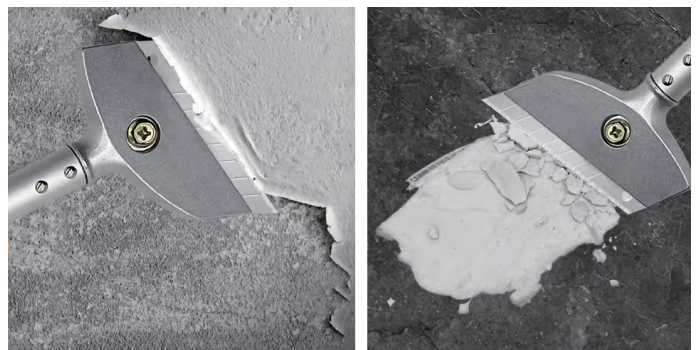


**70750301HC / HEAVY DUTY MULTIPURPOSE SCRAPER**



**EXTENDABLE METAL HANDLE**  
Extendable handle Length: 62CM

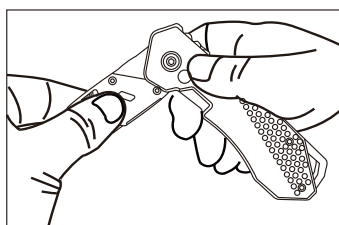
- Sharp 100mm steel blade
- Tubular aluminum alloy shaft and Soft grip handle Solid metal hammer end
- Ideal for scraping wallpaper, adhesive residue, paint, vinyl and tile.
- Overall length:390mm



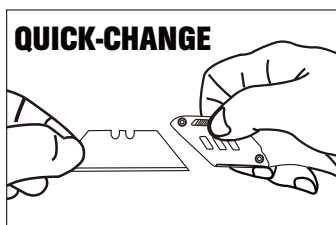
### 70760301N / FOLDING LOCK BACK KNIFE



- Foldable
- Quick blade change
- Integral belt clip
- Aluminum handle, stainless steel housing and skeleton.
- Safety lockback system.
- Quick change blade mechanism.
- Knife length: 170mm



Press the button to open or close utility blade



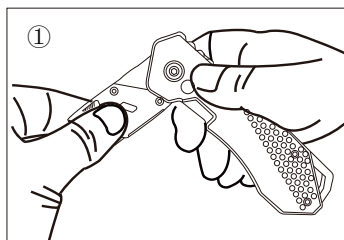
Quick change blade



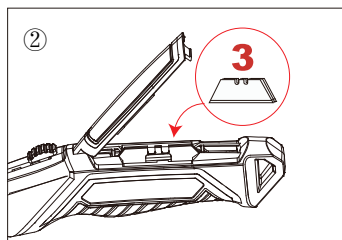
### 70770301N / FOLDING LOCK BACK KNIFE



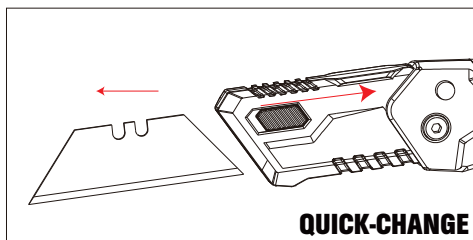
- Foldable
- Quick blade change
- Integral belt clip
- Zinc alloy handle with TPR soft grip
- Safety lockback system
- Quick change blade mechanism
- Blade storage in handle
- Knife length: 170mm



Press the button to open or close utility blade



extra blades in blade storage

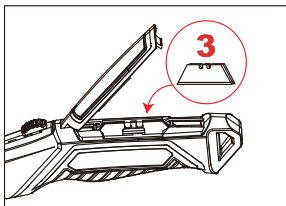


QUICK-CHANGE

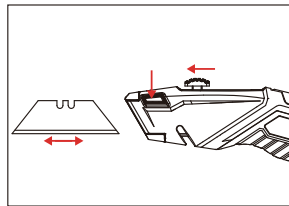
**70780301N / HEAVY DUTY RETRACTABLE UTILITY KNIFE**



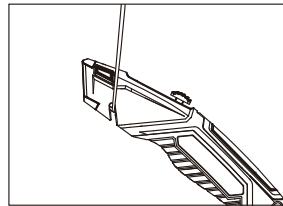
- Tool-free blade change
- Strong and durable construction
- Integrated string and foil cutter
- Blade storage and hang hole
- Knife length: 180mm



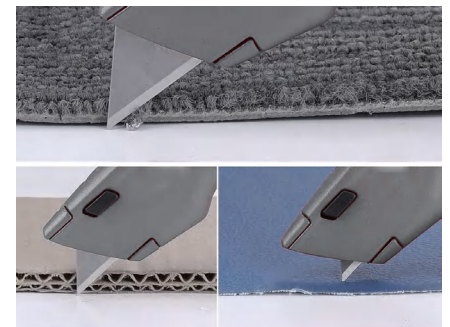
3 extra blades in blade storage



1. Push the button forward.
2. Press the button to release dull blade and insert newblade directly into thehousing.



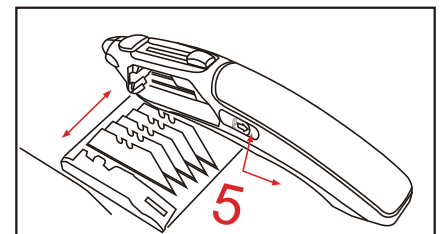
Cut string, rope, cord, etc. without extending blade.



**70780302N / HEAVY DUTY AUTO-LOAD UTILITY KNIFE**

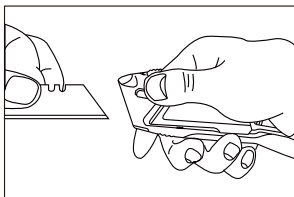


- Hardened zinc alloy housing
- Blade auto-load system
- Quick change blade mechanism
- Easy change blade cartridge
- Replacement blades:5
- Knife length:177mm

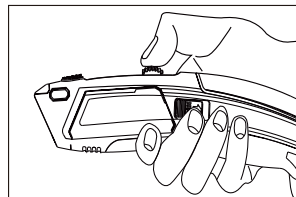


**How to change blade cartridge**

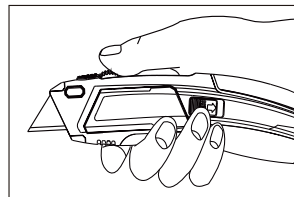
1. Blade actuator stays backward.
2. Press and move backward cartridge lock button.
3. Cartridge goes up from handle.
4. Take out empty cartridge
5. insert new cartridge.



Extend The Actuator Forward all The Way. Press The Button And Takeout Dull Blade.



Retract the actuator backward all the way.



Extend the actuator forward to refill new blade.

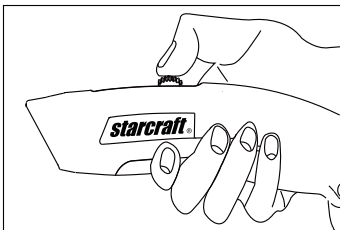
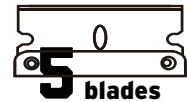
993001

## SCRAPERS & UTILITY KNIFE SET

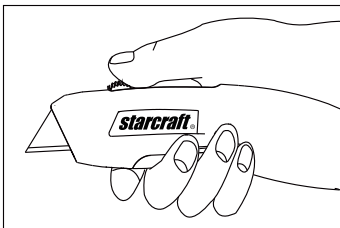


### KIT CONTAINES:

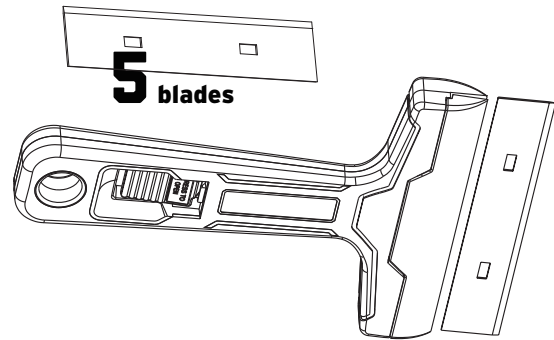
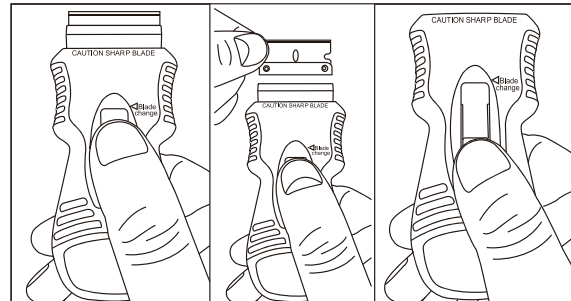
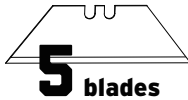
- 1) Retractable steel razor blade scraper with 5 replacement blade- 87mm
- 1) Retractable Steel razor blade scraper with 5 replacement blade-39.5mm
- 1) Retractable utility knife with 5 replacement blade-61mm



Retract the actuator backward all the way.



Extend the actuator forward to refill new blade.



**23740201HC CARBIDE GROUT SAW**



- Strips, cleans and removes old grout.
- Carbide grit edge removes grout quickly & easily.
- Ergonomic soft grip handle for better handling.
- Angled head for easier removing grout from the hard-to-reach places where machines can't reach.
- Hang hole for easy storage.
- Use 1 blade for narrow grout line.
- Length: 210mm|9"
- Blade width: 50mm|2"



**23740202HC CARBIDE GROUT SAW**



- Strips, cleans and removes old grout.
- Carbide grit edge removes grout quickly & easily.
- Ergonomic soft grip handle for better handling.
- Angled head for easier removing grout from the hard-to-reach places where machines can't reach.
- Hang hole for easy storage.
- Use 2 blades for wider grout lines.
- Length: 210mm|9"
- Blade width: 50mm|2"

### 23740203HC / CARBIDE GROUT SAW



- Strips, cleans and removes old grout.
- Carbide grit edge removes grout quickly & easily.
- Ergonomic soft grip handle for better handling.
- Angled head for easier removing grout from the hard-to-reach places where machines can't reach.
- Hang hole for easy storage.
- Use 1 blade for narrow grout line.
- Length: 210mm|9"
- Blade width: 50mm|2"



### 23740204HC / CARBIDE GROUT SAW



- Strips, cleans and removes old grout.
- Carbide grit edge removes grout quickly & easily.
- Ergonomic soft grip handle for better handling.
- Angled head for easier removing grout from the hard-to-reach places where machines can't reach.
- Hang hole for easy storage.
- 2 blades for wider grout lines.
- Length: 210mm|9"
- Blade width: 50mm|2"

**1065 / CARBIDE GRIT ROD SAW BLADE**

**6"**  
**10650201K**



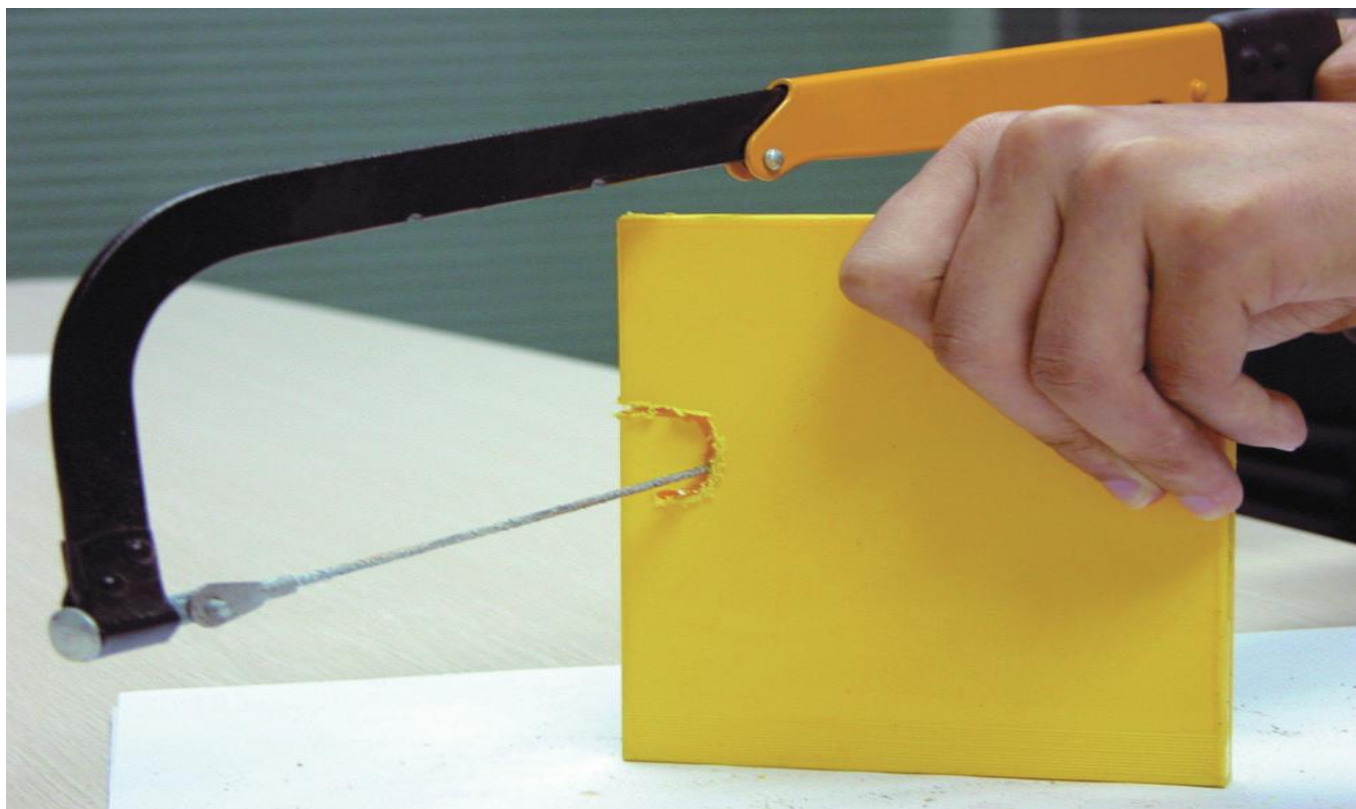
**10"**  
**10650202K**



**12"**  
**10650203K**



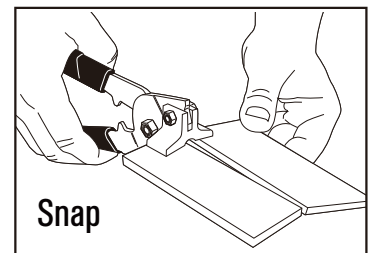
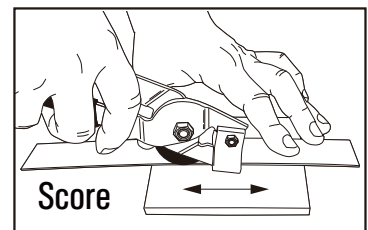
- Carbide grits, permanently bonded to a tough steel alloy rod, surround the saw, allowing to cut in all directions.
- Quickly & cleanly cuts any shapes in ceramic tile & marble.
- Use with standard 6/10/12 in rod saws.
- Used for cutting tough abrasive materials in hard-to-reach places.



### 70660301N / HANDHELD TILE CUTTER



- 1/2 in. tungsten carbide cutting wheel for durable and accurate ceramic tile scoring.
- Forged high quality high carbon steel for durability.
- Ergonomic soft-grip handle for anti-slip and comfort grip.
- Spring action reduces hand & wrist fatigue.
- For manually scoring and snapping small size ceramic tile.
- Specification: 8"|200mm



### 70670301N / TILE NIPPERS



- Drop-forged steel construction for maximum strength and durable use.
- Tungsten carbide tips for accurate and quick cutting.
- Ergonomic soft grip handle minimize hand fatigue during repeat use.
- Great for irregular cuts on ceramic tile & porcelain tile up to 3/8" (9.5mm) thick.
- Safety lock and spring
- Specification: 8"|200mm



**70670302N / TILE NIPPERS**



- Drop-forged steel construction for maximum strength and durable use.
- Tungsten carbide tips for accurate and quick cutting.
- Ergonomic soft grip TPR handle minimize hand fatigue during repeat use.
- Great for irregular cuts on ceramic tile & porcelain tile up to 3/8" (9.5mm) thick.
- Spring action reduces hand & wrist fatigue.
- Specification: 8"|200mm



**70680301N / PARROT HEAD TILE NIPPER**



- Drop-forged steel construction for maximum strength and durable use.
- Special parrot jaws design allows to enlarge holes in tile and forms tile edges.
- Spring action reduces hand & wrist fatigue.
- Ergonomic soft grip TPR handle minimize hand fatigue during repeat use.
- Great for rectifying holes, corners and other difficult cuts in pieces of tiles.
- Specification: 8"|200mm



### 33080313N / GLASS & TILE NIPPERS



- Dual durable carbide cutting wheel cuts glass or ceramic tile up to 3/8 in. (9.5mm) thickness.
- Drop-forged steel construction for maximum strength and durable use.
- Ergonomic soft grip TPR handle minimize hand fatigue during repeat use.
- Spring-loaded for easy pressure release.
- Great for nipping and shaping glass & tile.
- Specification: 8"|200mm



**Tip:** when the blades edges become worn, reposition the blade for a fresh cutting edge.



### 33080309N / GLASS BREAKING PLIERS



- Flat contact surface suitable for clamping flat glass.
- The fine toothed lines inside the jaw enhance clamping force, suitable for slippery or curved glass operations.
- Ergonomic soft grip TPR handle minimize hand fatigue during repeat use.
- Designed to break glass along score line.
- Specification: 8"|200mm long



**33080308N / STRAIGHT JAW GLASS RUNNING PLIERS**



- Straight jaw design provides precise control.
- Adjustable set screw allows you to control the amount of pressure applied.
- Designed to run a score along glass and break glass pieces with ease.
- Specification: 8" | 200mm long



**33080311N / CURVED JAW GLASS RUNNING PLIERS**



- Curved jaw exerts equal pressure on each side of the score reducing hand fatigue.
- Adjustable set screw allows you to control the amount of pressure applied.
- Designed to run a score along glass and break glass pieces with ease.



7039

DEAD BLOW HAMMER



- Durable one-piece plastic molded construction designed to stand up to bumps, drops and abrasive surfaces.
- Steel shot in the hammer's head produces heavy, controlled and effective blows without rebound..
- Non-sparking, non-marring soft face won't harm your target surface.
- Rubber handle with knurled textured and flared back end reduce slipping and reduce strain.
- Ideal for professional environments where fire prevention is a priority or concern.

**NON-MARRING**

**NON-SPARKING**

**MULTI-USE**

ITEM NO.	WEIGHT (lb)	WEIGHT (g)	HEAD DIA. (mm)	OAL (mm)
70399202HC	0.5LB	230	40	270
70399203HC	1LB	454	42	305
70399204HC	1.5LB	680	46	325
70399201HC	2LB	910	50	340
70399205HC	2.5LB	1130	54	350
70399206HC	3LB	1360	59	355
70399207HC	4LB	1810	64	370
70399208HC	5LB	2270	65	400

7082

DEAD BLOW HAMMER



- Durable one-piece plastic molded construction designed to stand up to bumps, drops and abrasive surfaces.
- Steel shot in the hammer's head produces heavy, controlled and effective blows without rebound..
- Non-sparking, non-marring soft face won't harm your target surface.
- Soft grip TPR handle for comfort and control.
- Ideal for professional environments where fire prevention is a priority or concern.

**NON-MARRING**

**NON-SPARKING**

**MULTI-USE**

ITEM NO.	WEIGHT (oz)	WEIGHT (g)	HEAD DIA. (mm)	OAL (mm)
70820201HC	32oz	910	52	325

**7083**

**RUBBER Mallet WITH WOODEN HANDLE**



- High-density rubber delivers all of the power without damaging surfaces.
- Standard black face for general work.
- Solid wood handle helps absorb shock while delivering powerful blows.
- Versatile applications: bricklaying, tiling & laying, woodworking, automotive work & mechanical work, and more.



**STRONG WOODEN HANDLE**   **2-SIDED RUBBER HEAD**   **FOR LAYING PAVING & CAMPING**

ITEM NO.	WEIGHT (oz)	WEIGHT (g)	HEAD DIA. (mm)	OAL (mm)
70830201HC	8oz	230	46	295
70830202HC	12oz	340	52	305
70830203HC	16oz	450	55	345
70830204HC	24oz	680	63	340
70830205HC	32oz	910	68	340

**7084**

**RUBBER Mallet WITH WOODEN HANDLE**



- High-density rubber delivers all of the power without damaging surfaces.
- Solid wood handle helps absorb shock while delivering powerful blows.
- Versatile applications: bricklaying, tiling & laying, woodworking, automotive work & mechanical work, and more.

**STRONG WOODEN HANDLE**   **2-SIDED RUBBER HEAD**   **FOR LAYING PAVING & CAMPING**

ITEM NO.	WEIGHT (oz)	WEIGHT (g)	HEAD DIA. (mm)	OAL (mm)
70840201HC	8oz	230	46	295
70840202HC	12oz	340	52	305
70840203HC	16oz	450	55	345
70840204HC	24oz	680	63	340
70840205HC	32oz	910	68	340

7085

### RUBBER HAMMER WITH WOODEN HANDLE



- Black and white rubber combination head protects surfaces from damage and is fit for multiple purposes.
- Use the black side for general work such as laying paving tiles, and the white, mark-free side for mouldings that require high precision, such as laying parquet and laminate.
- High-density rubber delivers all of the power without damaging surfaces.
- Solid wood handle helps absorb shock while delivering powerful blows.
- Versatile applications: bricklaying, tiling & laying, woodworking, automotive work & mechanical work, and more.

**STRONG  
WOODEN  
HANDLE**

**2-SIDED  
RUBBER  
HEAD**

**FOR LAYING  
PAVING &  
CAMPING**

ITEM NO.	WEIGHT (oz)	WEIGHT (g)	HEAD DIA. (mm)	OAL (mm)
70850201HC	8oz	230	46	295
70850202HC	12oz	340	52	305
70850203HC	16oz	450	55	345
70850204HC	24oz	680	63	340
70850205HC	32oz	910	68	340

7086

### RUBBER Mallet WITH PLASTIC HANDLE



- High-density rubber delivers all of the power without damaging surfaces.
- Standard black face for general work.
- Soft-grip non-slip handle provides comfort grip and reduces hand fatigue.
- Versatile applications: bricklaying, tiling & laying, woodworking, automotive work & mechanical work, and more.

**SOFT-GRIP  
PLASTIC  
HANDLE**

**2-SIDED  
RUBBER  
HEAD**

**FOR LAYING  
PAVING &  
CAMPING**

ITEM NO.	WEIGHT (oz)	WEIGHT (g)	HEAD DIA. (mm)	OAL (mm)
70860201HC	8oz	230	46	310
70860202HC	12oz	340	52	330
70860203HC	16oz	450	55	335
70860204HC	24oz	680	63	365
70860205HC	32oz	910	68	370

**7087**

**RUBBER Mallet WITH PLASTIC HANDLE**



- High-density rubber delivers all of the power without damaging surfaces.
- White rubber face for working without marking or discolouring surfaces.
- Soft-grip non-slip handle provides comfort grip and reduces hand fatigue.
- Versatile applications: bricklaying, tiling & laying, wood-working, automotive work & mechanical work, and more.



**SOFT-GRIP PLASTIC HANDLE**    **2-SIDED RUBBER HEAD**    **FOR LAYING PAVING & CAMPING**

ITEM NO.	WEIGHT (oz)	WEIGHT (g)	HEAD DIA. (mm)	OAL (mm)
70870201HC	8oz	230	46	310
70870202HC	12oz	340	52	330
70870203HC	16oz	450	55	335
70870204HC	24oz	680	63	365
70870205HC	32oz	910	68	370

**7088**

**RUBBER Mallet WITH PLASTIC HANDLE**



- Black and white rubber combination head protects surfaces from damage and is fit for multiple purposes.
- Use the black side for general work such as laying paving tiles, and the white, mark-free side for mouldings that require high precision, such as laying parquet and laminate.
- High-density rubber delivers all of the power without damaging surfaces.
- Soft-grip TPR handle provides comfort grip and reduces hand fatigue.
- Versatile applications: bricklaying, tiling & laying, woodworking, automotive work & mechanical work, and more.

**SOFT-GRIP PLASTIC HANDLE**    **2-SIDED RUBBER HEAD**    **FOR LAYING PAVING & CAMPING**

ITEM NO.	WEIGHT (oz)	WEIGHT (g)	HEAD DIA. (mm)	OAL (mm)
70880201HC	8oz	230	46	310
70880202HC	12oz	340	52	330
70880203HC	16oz	450	55	335
70880204HC	24oz	680	63	365
70880205HC	32oz	910	68	370

7092

### DEAD-BLOW HAMMER WITH NYLON INSERTS WOODEN HANDLE



- Strong steel central piece with spigot and collar for holding the inserts.
- Nylon inserts are ideal for use on harder metals such as steel.
- Wooden handle helps to absorb vibration during impact.
- For straightening or aligning components on machine tables or for application of light impacts in assembly work.



ITEM NO.	HEAD DIA. (mm)	OAL (mm)
70920201HC	25	305
70920202HC	30	315
70920203HC	35	330
70920204HC	40	340
70920205HC	45	375
70920206HC	50	380
70920207HC	60	410

7080

### DOUBLE FACE HAMMER WITH PLASTIC HANDLE



- Forged steel central piece with 2 interchangeable impact plastic inserts.
- Plastic insert strikes a focused blow for hard and soft metal, wood, plastic, and leather.
- Soft-grip TPR handle provides comfort grip and reduces hand fatigue.
- For straightening or aligning components on machine tables or for application of light impacts in assembly work.



ITEM NO.	HEAD DIA. (mm)	OAL (mm)
70800201HC	35	325



Dotted lines for writing notes.



Dotted lines for writing notes.



Dotted lines for writing notes.

Handwriting practice area with horizontal dashed lines and three binder holes on the right side.



***starcraft***®

QUALITY · VALUE · INNOVATION

**Enjoy Work!  
Enjoy Life!**

**[www.starcrafttools.com](http://www.starcrafttools.com)**



Add: No. 880 Xingwen Road, Jiading District, Shanghai, China

Tel: 0086-21-33517000

Email: [sales@starcraftgroup.com](mailto:sales@starcraftgroup.com)

Copyright © 2026